



NORTH BIHAR POWER DISTRIBUTION CO. LTD., PATNA

(Registered Office, Vidhyut Bhawan, Bailey Road, Patna)

(Department of Rural Electrification)

Letter No. - N-XII/RGGVY/GTP & Drawing/Supaul-1174/2015-

Date-

E-mail-cere.bseb@gmail.com

From,

S.K. Srivastava
Chief Engineer (Project-I)

To,

M/s Shirdi Sai Electricals Ltd.
Flat # 102, J.S.R.V. Plaza, S.R. Nagar
Hyderabad, Andhra Pradesh-500038

Sub:-

Regarding approved GTP, Drawing of M/s Nalanda PSCC Poles, Chattra

Ref:-

Your letter no.-SSEL/NBPDCL/16-17/P/001 dated 07.05.2016

Sir,

Please find enclosed herewith approved GTP/Drawing of following items submitted by you vide letter under reference as per REC/TS, 12th Plan RGGVY work and valid type test report for Supaul District.

S.N	Material Description	Vendor Name
1	8 Mtr./200 KG PSC Pole	M/s Nalanda PSCC Poles, Showmbarsha (V) Block Huntergun], Chattra (Dist.), Jharkhand-825408

It may please be noted that approval of GTP/Drawing of subject material does not absolve you of contractual responsibility in terms of its quality etc in case any problem/ issue with regard to material/vendor arises at any stage, NBPDCL reserves the right of withdrawal of this approval as well as ask the turnkey contractor to replace the materials at their own cost immediately.

Encl- As above

Yours faithfully

Sd/-

(S.K. Srivastava)

Chief Engineer (Project-I)

Memo No.-

Date-

Copy with a copy of approved GTP, Drawing forwarded to ESE, Electric Supply Circle, Saharsa/EEE (Project), Electric Supply Division Supaul for information and necessary action.

Encl-As above

Sd/-

(S.K. Srivastava)

Chief Engineer (Project-I)

Memo No.-

3046

Date-18-5-16

Copy forwarded to Electrical Executive Engineer (IT), North Bihar Power Distribution Company Limited to upload this information and GTP & Drawing on NBPDCL website.

Encl-As above

(S.K. Srivastava)

Chief Engineer (Project-I)

172

PROJECT	RURAL ELECTRIFICATION WORKS IN SUPAUL DISTRICT OF BIHAR
LOA No	N-XII/RE/NIT-161/14/SUPAUL-1419/4664 DATE: 29.12.2014
	N-XII/RE/NIT-161/14/SUPAUL-1419/4665 DATE: 29.12.2014
CLIENT	NORTH BIHAR POWER DISTRIBUTION COMPANY LTD
CONTRACTOR	M/s. SHIRDI SAI ELECTRICALS LTD
	#6-3-879/B, 3rd Floor, Green Lands, G Pulla Reddy Sweets Building, Beside CM Camp office, Begumpet, Hyderabad -500016
SUPPLIER	M/s.NALANDA PSCC POLES Shownbarsha (V), Block Huntergunj, Chattra (Dist), Jharkhand-825408

TECHNICAL GUARANTEE PARTICULARS OF 8.0 M/200 KG WORKING LOAD

Sl.No	Description	
1	Type of Pole	Flat ✓
2	Top Section	145x90 mm ✓
3	Bottom Section	290x90 mm ✓
4	Quantity of Concrete	0.157 Cubic Meter ✓
5	Concrete Grade	M-40 ✓
6	HT Steel Wire	4 mm Dia
7	G.I Wire	4 mm Dia
8	Overall Length Support	8.0 M ✓
9	Planting Depth	1.5 M ✓
10	Number of HT Steel Wires	
10a	Tensioned Wires	12 Nos ✓
10b	Untensioned Wires	2 Nos ✓
11	Pre-Tension applied to each 4 mm wire	1760 Kgs
12	Minium Cube Strength of Concrete at 28 Days	400 Kg/Sq.cm
13	Clear Cover	20 mm
14	Factor of Safety	2.5 ✓
15	Working Load	200 Kgs ✓
16	Ultimate Load	500 Kgs
17	Weight of Pole (Theoretical)	380 Kgs ✓
18	Load Application at a Point from the Top	600 mm
19	Ultimate Tension Strength for 4mm Wire	17500 kg/Cm ² ✓
20	Line Voltage	11kV-HT & LT Lines ✓
21	G.I Earth Wire 8 SWG	1 No

* Conforming to T.S of RRVY 12th Plan

Checked

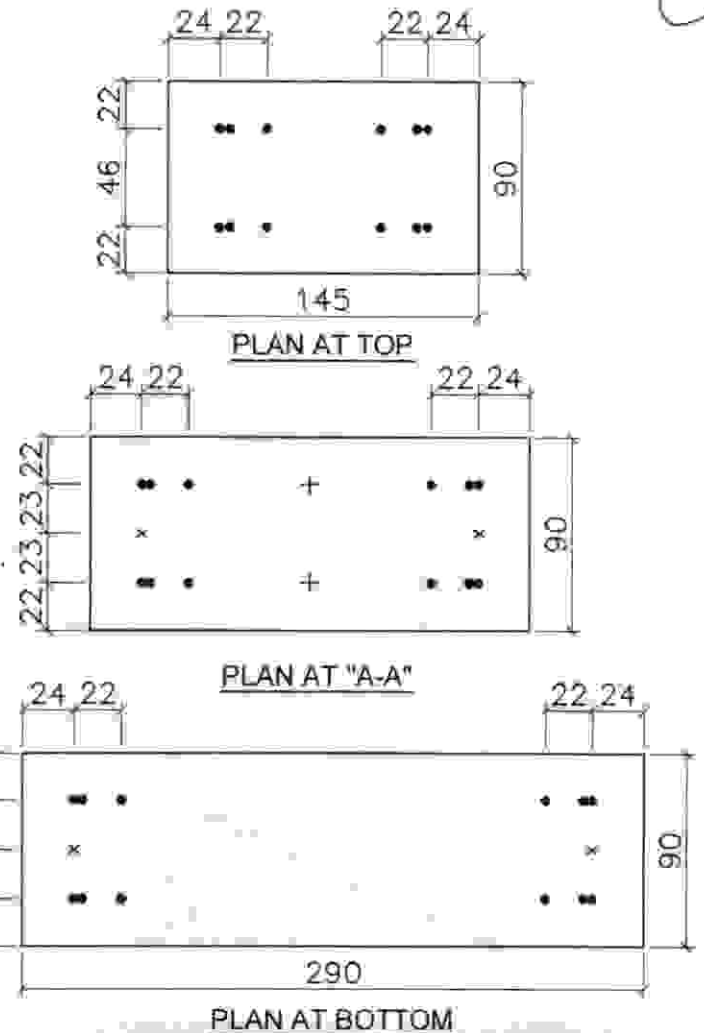
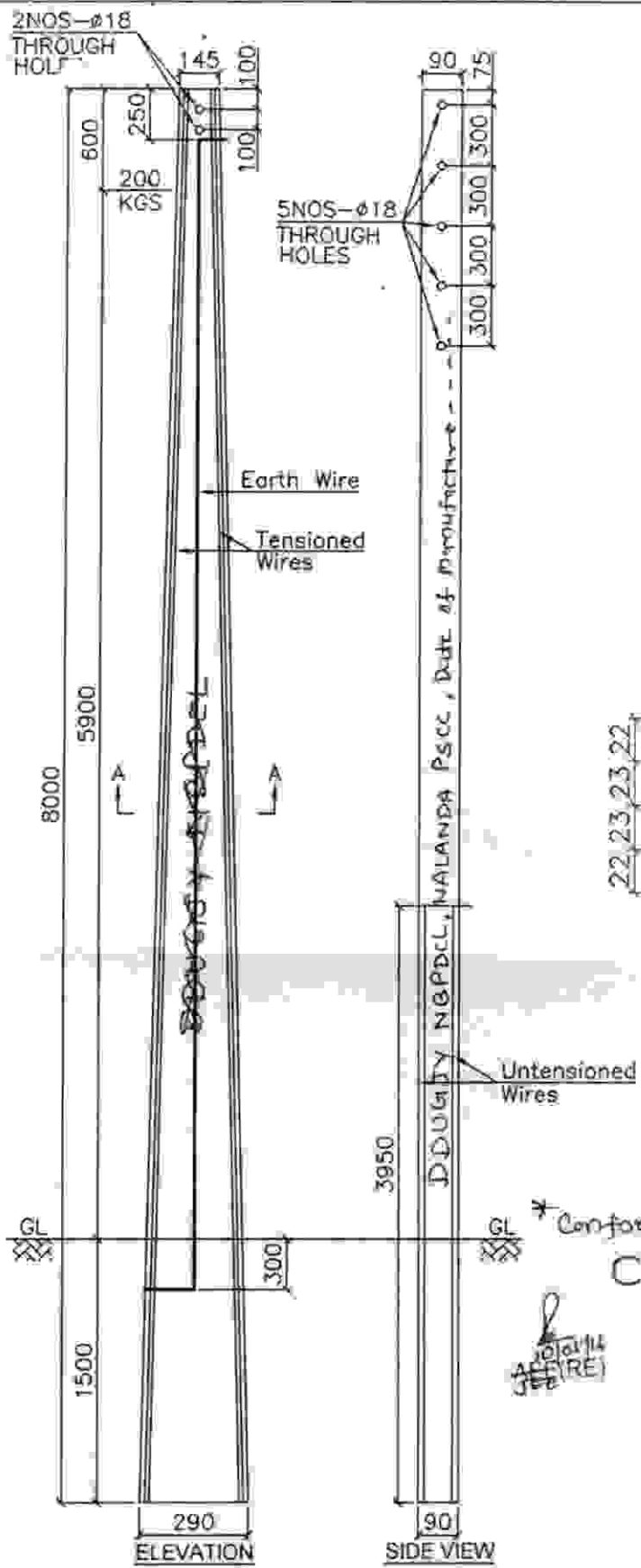
[Signature]
EEE(RE)

[Signature]
EEE(RE)

ESE(RE)

Approved
[Signature]
E.E. (In-charge - T)
NBPDC, Patna

12A



LEGEND:

- DENOTES TENSIONED WIRES
- × DENOTES UNTENSIONED WIRES
- + DENOTES POSSIBLE POSITION OF EARTH WIRE

NOTES:

1) ALL DIMENSIONS ARE IN MM. (NOT TO SCALE)

* Conforming to T.C. of Railway
Checked 12th Plan. **Approved**
 EEE(RE) ESE(RE) CE (Project-1) NBPDC, Patna

* Marking on Pole should be done as per Engraving T.C. of D.Dugiby 12th Plan

PROJECT	RURAL ELECTRIFICATION WORKS IN SUPAUL DISTRICT OF BIHAR
LOA No.	N-XIURE/NIT-161/14/SUPAUL-1419/4664 DATE: 29.12.2014 N-XIURE/NIT-161/14/SUPAUL-1419/4665 DATE: 29.12.2014
CLIENT	NB NORTH BIHAR POWER DISTRIBUTION COMPANY LTD GOVERNMENT OF BIHAR
CONTRACTOR	ESE SHIRDI SAI ELECTRICALS LTD No-3-8732B, 3rd Floor, Green Lands, C Palla Rectory Swiss Building, Beside DM Camp office, Begumpet, Hyderabad-500015
SUPPLIER	NALANDA PSCC POLES Snowbasta (V), Bina, Hattargur, Distra (DA), /Muz/Sno-825400
TITLE	GA OF 8.0 MTR/200 KG. PSC POLE (90MM WIDTH POLE)

TECHNICAL GUARANTEE PARTICULARS OF 8.0 M/200 KG WORKING LOAD		
S.NO.	DESCRIPTION	QUANTITY
1	TOP SECTION	145x90MM ✓
2	BOTTOM SECTION	290x90MM ✓
3	QUANTITY OF CONCRETE	0.157M ³ ✓
4	CONCRETE GRADE	M40 ✓
5	OVERALL LENGTH SUPPORT	8M ✓
6	PLANTING DEPTH	1.5M ✓
7	DIA METER OF PRESTRESSING WIRE	4MM ✓
8	NUMBER OF TENSIONED WIRES	12No ✓
9	NUMBER OF UNTENSIONED WIRES	2No ✓
10	MINIMUM CUBE STRENGTH OF CONCRETE AT 28 DAYS	400 Kg/Cm ² ✓
11	CLEAR COVER	20MM ✓
12	FACTOR OF SAFETY	2.5 ✓
13	WORKING LOAD	200KG ✓
14	ULTIMATE LOAD	500KG ✓
15	WEIGHT OF POLE (THEORITICAL)	380KG ✓
16	LOAD APPLICATION AT A POINT FROM THE TOP	600MM ✓
17	ULTIMATE TENSILE STRENGTH FOR 4MM WIRE	17500KG/CM ✓
18	BSWG G.I EARTH WIRE	1No ✓